

Baptists and Methodists together at Hampton Methodist Church



Autumn 2024



Hampton Methodist Church, Percy Road, Hampton, TW12 2JT

Hampton Mission Partnership is a member of Churches Together around Hampton

Church website <https://hamptonmissionpartnership.org.uk>

We live in a violent world, where it only takes a few people with evil in their hearts to attack people with different beliefs or viewpoints to themselves. Hence we have two major conflicts in the world at the current time: the Russians having invaded Ukraine over two years ago are in a bitter and violent conflict with them, and the Israelis having had thousands of their own countrymen killed by Hamas guerrillas have succeeded in killing over 40,000 Palestinian Muslims and some Christians. There are other conflicts all around the world mostly caused by greed and a misunderstanding of other people.

We have seen in our own land a positive hatred against asylum seekers, who are generally Muslims, with terrific and terrible acts of violence being shown towards them and the police. This got me around to thinking what is the Christian attitude towards people of another faith who come from another country?

Some people say "They've got their own religion; all religions lead to God, let's leave them to it." What should the Christian approach be to people of other faiths?

It is easy, if you come from a rural area where there are very few people of other faiths, to ignore the situation completely. However here in Hampton we have a minority of people of other faiths yet less than 5 miles away in Hounslow people from other faiths form the majority of the population and there is a sense in which people who live there, if they are Christian, have to tackle the issue. Indeed some of us were very worried about those living in an asylum seekers hotel in Hounslow when violence was threatened against it.

Last Sunday morning I was preaching at a small Methodist church on the Butts Farm estate in Hanworth. I was told before the service that the previous week there had been a gentleman in the congregation who was a Muslim and he would make comments during the service. He was in fact there and it looks as though he will become a regular member of the congregation. We got into conversation and he said whilst he normally went to the Mosque, he had come to the church as it was nearer than the mosque in Hounslow. An interesting dilemma arises as to how to approach the situation.

Jesus says as quoted by Matthew in chapter 28 verses 19 and 20: "Go and make disciples of all nations, baptising them in the name of the Father and of the Son and of the Holy Spirit." We don't even have to do that now. The world has come to our own doorstep.

I leave you with that thought and ask you to consider what your role is as a Christian disciple in the UK in the twenty first century.

May God bless you as you seek to serve him.

Your friend and pastor

Philip Slater.

What a summer

I cannot imagine that many of us will look back fondly on the Spring and Summer of 2024 while remembering the weather – too much rain and not enough sun may well be the overall verdict – but what a summer of sport!

Don't stop reading! I am not going to bang on endlessly about the cricket (although Surrey look to be headed for their third successive Championship win as I write) but we will remember the spectacular Paris Olympics, England's run in the Euro Finals, Andy Murray's final Wimbledon and many other events where Christians have been able to share their faith with fellow competitors.

For me the highlights of Hampton Mission Partnership's summer have been:

- Sunday, 28th April when we welcomed three of our fellowship into membership – Janet Burt, Celia Redwood and Sarah Sones in an uplifting service led by our Lay Pastor, Philip Slater.
- Our fifth anniversary service on 21st July led by Rev David Innes who reflected on our journey following God's guidance.
- Sunday, 7th July when Parastoo and Seyed were baptised and then came into membership of Hampton Mission Partnership. There was further joy after the service when they shared that they are to become parents.
- 57 children at Messy Church on 13th August.

Our friends at Linden Hall Community Centre have been in touch about their programme from September when they will be starting 'Short Mat bowls' on a Monday afternoon 1-3pm, as well as continuing with their Zumba Gold, Seated Exercises and Table Tennis sessions. Their 'Community Suppers' project on a Tuesday afternoon 3-5pm, continues offering anyone in the local community a freshly made meal to eat in or take away, along with surplus foods of fresh fruit and vegetables amongst other items provided by 'Surplus to Supper' for free or for a voluntary donation.

We are grateful to God for all that He has provided for us so far this year and look forward in eager anticipation to what He will lead us to in the coming months.

Barbara Spittle

Senior Steward

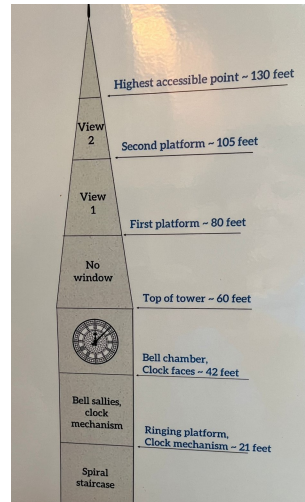


We have supported the charity which David Priddy represents and have a collection box in the narthex. David recently emptied the box and sends a sincere thank you through this picture. David is planning his next visit to India where he will link with Tribal Transformation – India which both we and his charity support.

Climbing the Bell Tower at St James's Church, Hampton Hill

On Saturday 6 July 2024 St James's Church held an Open afternoon to raise much needed funds for the church. There were various stalls (cakes, tombola, plants, bagatelle game, books.) There was also an option (for a small donation) for visitors to climb the church bell tower.

I decided to take up the challenge as it was something I had never done before.



The first ascent of the tower was 72 narrow stone steps with a rope at one side to hold onto. At the top of these steps we were able to see the mechanics of the church clock with a huge brass pendulum and also the bell ropes from where the bells are played. The bells are not rung individually using a long rope: all six bells can be played by one person using the short ropes with a 'pull handle' on each, all enclosed in a wooden case on the wall. Visitors were able to have a try at ringing the bells.



Every New Year's Eve a bell ringer goes up to this first level of the tower to ring in the New Year. This starts with rather solemn tunes. As soon as it is midnight the bells are rung twelve times and then joyful music follows.

We then ascended via a narrow wooden staircase to the next level where we were able to see the six huge bells which are fixed and rung by an external hammer. Several more flights of wooden steps took us almost to the top of the tower (the last level via a ladder wasn't open to visitors.)



From the top level the views were amazing and far reaching. The windows were covered with mesh or Perspex sheet to keep out bats and pigeons.

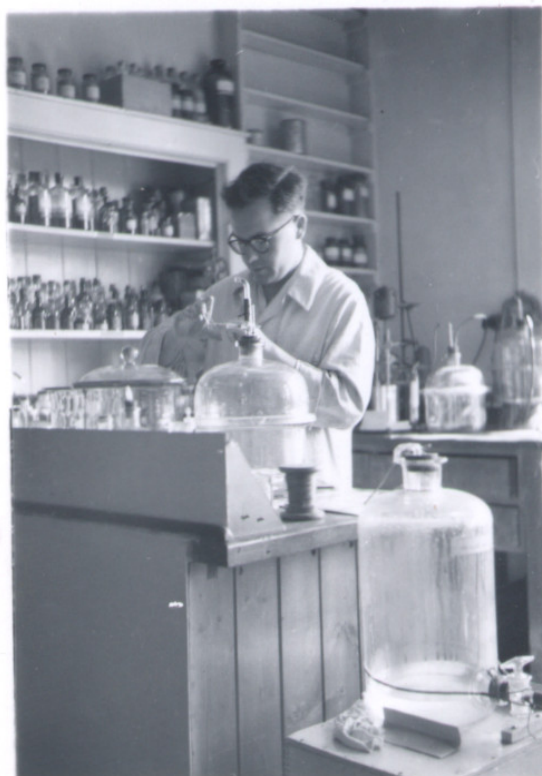


We then returned to ground level via the same route-wooden steps and finally the 72 stone steps. It was certainly a great experience and I was glad I took up the challenge-but nice to be back in the church to enjoy a very welcome cup of tea and a slice of cake.

Wendy Salmon

Alan Charles Dennison 1928-2024

Alan was born in July 1928 at home in Richmond, joining older brother Jim and followed by sister June, who both predeceased him. He attended primary and junior school in Richmond, but during the second world war the family lived for a while in Bristol, then later in Bedford, before returning at the end of the war, by which time Alan had completed his A levels. He then started work at the Paint Research Association in Teddington. While there he studied for a chemistry degree in evening classes at Battersea Polytechnic, graduating in 1951, and met Mary, who he married in 1955. They set up home near the Rugby ground in Twickenham. By then he was working as a research chemist for Duckhams, then later joined BP at Sunbury, where he spent the rest of his working life. Alan retired in 1986, aged 58. The family was extended by the arrival of Michael in 1958 and Philip in 1961.



He was a committed Christian all his life, following his father in being very involved in the Kew Road Methodist Church in Richmond. He had many roles - various stints as a church steward, Sunday School Superintendent and teacher for many years, choir member and property steward. He was always involved in various charitable works, supporting many with both financial gifts and practical help. For many years he provided transport for elderly people to an evening social club in Twickenham.

Alan and Mary moved to Hampton after his retirement, seeking a quieter environment. He quickly became involved with the local Methodist Church, although deliberately avoided anything to do with property or Sunday School!

He was always keen on holidays - even with a young family there were always two or three holidays each year. These were varied, some to seaside places - he was particularly keen on Norfolk and Dorset - or later with walking holidays in the Lake District and sailing yachts on the Norfolk Broads. Shorter holidays were often spent visiting friends or family round the country.

There was also his love of railways, travelling by train, visiting museums and preserved railways, and model railways. There would always be trips to visit places of railway interest on holiday, especially miniature railways, of which he was particularly fond. He became a great supporter of the Ravenglass and Eskdale Railway in Cumbria, and the Bure Valley Railway in Norfolk.

At the home in Twickenham, Alan constructed a model railway in a garden shed, and on moving to Hampton graduated to the luxury of a dedicated bedroom. He enjoyed a miniature steam engine driving course on the Bure Valley railway, and drove a full-sized diesel engine at a museum in California.



Alan was an avid puzzler and for many years enjoyed the challenge of cryptic crosswords. In 1997 he was a contestant on the TV show "Countdown". He was also keen on jigsaw puzzles and did a lot of reading as well.

His musical interests included swinging jazz, church choral and particularly pipe organs. An electronic organ was installed in the Hampton home.

Mary needed a lot of looking after in her last few years at home, but once she needed full-time care and moved into a nursing home, Alan became more active again, doing a lot of walking, completing both the Capital Ring and London Loop walks around London, and right to the end he also enjoyed revisiting old haunts, making good use of his Freedom Pass to travel.



Memories of Alan

I had been a member of Hampton Methodist (as it then was) for a while when Alan and Mary Dennison moved to the area and joined the church. They became regular worshippers, along with Mike and Sue and, in time, their beloved grandchildren, Sarah and Zoë.

After Mary's death Alan seemed determined to continue to live life to the full. He pursued his interests in model railways and music as well as in travel and transport, planning and enjoying days out and holidays in various parts of Britain.

One of my more unusual associations with Alan was our marmalade making sessions, which became an annual fixture during the Seville orange season. He would buy the ingredients and invite me round to help in the next stage, following instructions from Mary's hand written recipe. Alan was always meticulous in preparation and paid great attention to detail so, on arrival in the kitchen, I would find the requisite utensils and other equipment already laid out. We chopped and chatted, boiled and stirred until we had finally filled all the waiting jars. They were left to cool overnight and the following day Alan would kindly give me some, now neatly labelled.

Another annual occasion when Alan and I worked closely together was at Remembrance Day services held outside the Memorial Cottages. Alan provided his portable keyboard/organ and I played it. But there was more to it than that. On the morning in question Alan, ever the careful planner, would load into his car not only the organ but plastic chairs (two, to be specific, to raise me to the most comfortable height to play), plus a mat to put under the chairs to prevent the legs sinking into the grass and an umbrella to protect from the elements. Once the service started, he would be my 'right hand man', changing hymn books when required, placing them on the music stand, tucking them behind his well-positioned piece of elastic to counter the effects of any windy gusts. He would also operate the volume button as necessary during the laying of wreaths ceremony.

When I was playing the hymns during services, it was lovely to hear Alan's rich bass voice resounding in the church. He was a valued member of our ad hoc choirs for special occasions and indeed very supportive of all church activities. At Friday Focus lunches, which were instigated following refurbishment of the church kitchen, he was a regular attendee and, in addition to being extremely encouraging and appreciative of the meals served, would always provide a warm and friendly welcome to everyone.

I bade a fond farewell to Alan when I retired and moved to Devon in 2015. A few years later, however, by which time he was nearly 90, he contacted me to say he had booked a holiday at Lyme Regis and would like to come and visit us. Perhaps I shouldn't have been amazed that not only could he still drive himself to his holiday destination but also had the confidence and competence to be able to navigate to Crediton on his own and find our house. He did exactly that without a problem and, true to form, reliable as ever, arrived exactly at his estimated time. After a catch up over coffee and a leisurely lunch together, he readily took up the option of a walk around the town, even though I warned him about the hills! His keenness for exploring new places and garnering information had in no way diminished. When he left that evening, it didn't occur to me that this might be the last time I would see him. I suppose it should have, but I'm glad it didn't. As I waved him off I was just pleased to have spent a lovely day with Alan, as content and capable as I remembered him from my Hampton days.

Saddened as I was to hear of his death, these reflections and reminiscences have caused joy in my heart. My life has been enriched and enhanced through friendship with him. I believe everything

Alan did in his long and well-lived life was underpinned by his faith in Jesus Christ and it's good to have the assurance that he is now at rest in the loving presence of his Lord and Saviour. God bless you, dear Alan.

Hilary Everitt



Embracing Age and care home clothing donations

Mary from Embracing Age is very grateful for our support in advertising the clothing project in care homes and there are now five new homes without enough clothes for a host of reasons. The project has been on hold over the summer but from October will be happy to collect blouses and shirts, cardigans and jumpers, T-shirts and tops, trousers and tracksuit bottoms, nightwear and dressing gowns, ponchos and shawls, vests and stretchy socks, hats, gloves and scarves, jackets and fleeces (waist/thigh length) and clothes hangers.

They also now supply full length winter coats or warm jackets to carers who may not have enough warm winter clothing. All clothes are distributed at the care home manager's discretion.

If you can knit or crochet, they also have patterns for bed capes.

Contact: mary@embracingage.org.uk to arrange a collection.

Bible Fellowship for Everyone

The two words Bible Fellowship sum up beautifully not only what this vital Church activity is all about, but also the two reasons it was created.

We sensed the need for us as a church family to have a mid-week, daytime fellowship. We wanted us all to be able to share our relationship with God in an informal and relaxed way. In addition, Bible study is essential to a Christian lifestyle. Communal Bible study complements the Bible teaching in Worship and the study we do privately.

The HMP Home Group has provided these two vital elements for some years but was there room for a daytime fellowship as well? We consulted Chris to make sure that the Bible Fellowship would not clash with the Home Group. Chris was clear that it wouldn't and, with support from her and the other Stewards, we undertook a trial for the Fellowship in autumn of last year.

We chose the theme 'Questioning God' and selected three well known Bible passages that we could look at more deeply than we could during a Sunday service. A logical place to start was Jesus' encounter with the Samaritan woman at the well (John 4:4-42). She asks, 'How can you, being a Jew, ask from me 'to drink,' while I am a Samaritan Woman?'

Our second meeting in November looked at the conversation between Jesus and Peter (John 21:1-22) when Jesus asks, 'Do you love me more than these?' Our December meeting had an Advent theme as we considered Mary's question (Luke 1:26-38) to Gabriel 'How will this happen?'

We reviewed the trial, with great help from the attendees, the Stewards, and friends at Plenty café providing refreshments. We felt that we needed to move from a monthly to a fortnightly pattern of meetings that alternated between Bible Study and Fellowship discussion. The attendance at all of these sessions proved that was a right decision!

The theme for the new Bible study sessions was 'Women in the Bible.' Our reasoning being that we hear and know a great deal about the male figures in the Bible, but sadly, less about the amazing women.

This has proved to be a rich vein for us to mine.

So, we have enjoyed the company of the colourful Rahab - was she harlot, or heroine, or both? We have marvelled at the diplomacy of the intelligent and beautiful Abigail. We have compared and contrasted the sisters Martha and Mary. The impressive Lydia has wowed us - the very first Christian convert in Europe. We have highlighted the fact that women prophets were around throughout the Old Testament period but they were not recorded, unless they broke into the male dominated world as Huldah, the prophetess of doom did. This theme led us to Anna, the prophet who met the baby Jesus. We also learnt that the so-called Witch of Endor was actually a medium not a witch and is a prime example of going the extra mile!

The Fellowship dimension.

We wanted to provide a safe, confidential space for discussion about absolutely anything. We know that we all have worries and needs at various times in our lives and the support and encouragement from our brothers and sisters is absolutely vital. (Galatians 6 v 2) 'Carry each other's burdens and in this way you will fulfil the law of Christ'.

Amongst other things we have had some very interesting discussions on:

- How we deliver bad news and offer support.
- Dealing with feelings of low self worth. This was something that we discovered the majority of us had encountered at some point in our lives.
- The minefield of dealing with house/car insurance to obtain the fairest policies.
- The recent riots.
- Concerning situations in the world.
- How we deal with waiting, whether it be on the telephone to a call centre or for an answer to prayer. Do we become impatient, frustrated and bad tempered or do we trust in God and show a Christian attitude?

It really has been wonderful to meet together to socialise and share experiences and of course, build one another up and support each other.

We always end each session with a response to any prayer requests which may have arisen.

So, who is Bible Fellowship for? Simply put it is for everyone. We have operated an open door. The meetings are all on Wednesdays, and normally start at 2.00pm with a cuppa and finish around 3.15pm.

The dates of the next meetings are:

2 nd October	Chat
16 th October	Bible Study
30 th October	Chat
13 th November	Bible Study
27 th November	Chat
11 th December	Bible Study
18 th December	Chat

Please join us. We genuinely believe that you will find it friendly, supportive, and enlightening for your faith journey.

Linda and Mark

Reaching young children with the good news of Jesus – Nick White

Sutton Schoolwork (SSW) is a Christian Charitable Trust which has been serving schools in the London Borough of Sutton for nearly three decades. I have had the huge privilege of volunteering with them for 18 years since retiring, principally in the 40 or so Primary Schools. During that time, the scope of SSW's work has continued to grow, helped by the very positive reception we continue to receive from most of the schools in the Borough. Some of the SSW activities may give ideas to readers about opportunities in Hampton and the surrounding area.

The core of our work in Primary Schools is Assemblies. SSW provides a short 15–20-minute bible-based assembly every half term in nearly every school. This includes a Bible story, a message based on Christian values, a worship song and a closing prayer. It often includes a short piece of drama, a quiz or a game, usually with participation by some of the children. The assemblies are apparently memorable because some of the current teachers remember them from when they were primary school kids themselves. During COVID, the assemblies were made into videos available to schools online - some are still there via the web site at www.suttonschoolwork.co.uk

Since 2006, SSW has presented a drama called "Easter Experience" in local churches, in the weeks leading up to Easter. This covers the last week of Christ's life on Earth, from the entry into Jerusalem to the first resurrection appearance to Mary Magdalen. The drama lasts about an hour and is attended by 60-100+ children at a time (plus teachers and adult helpers) and is expanding in 2025 to a four-week run. This is followed by a question-and-answer session where the children ask us as characters questions about why we did what we did and can also ask what Christians believe happened. With morning and afternoon performances it reaches 1500, rising to 2000 children. The schools travel to a church near them (mostly walking) and attendees are mainly from Year 4. Here is yours truly as Pontius Pilate!



In recent years, another event has been added at Easter, aimed at year 2s. This is called "CSI Easter" – Crime Scene Investigates! The children take part as detectives and are given various clues concerning the case of the missing body – the empty tomb after the crucifixion.

There are fingerprints at the tomb to be identified, coded messages, video interviews of Mary and a Roman Centurion, and 10 items of evidence at the tomb – the nails, the dice, the purple cloth, the crown of thorns etc. Once they have worked through everything, they are given four optional explanations to choose from, as to what they think happened – He didn't die, it was someone else, the disciples stole the body, or He came alive again. It is so encouraging when most of them choose

the fourth option! See Instagram photos at

https://www.instagram.com/suttonschoolswork/p/C42cCc5NfRF/?img_index=4

At Christmas, we run workshops called “Discover Christmas” which include a shorter drama followed by an in-class workshop which covers creation, sin, the nativity story and why Jesus came, culminating in presenting Jesus as the “Light of the World”. The workshop teaches them a memorable song and encourages them to think how they might shine light into others’ lives.

Throughout the year, SSW also provides “RE Days” to some schools, which meet their main curricular requirements, and are available for each of the 6 Primary years. The topics include ‘What’s in the Bible”, “Faith in Action”, “Diary of a Disciple”, “What does it feel like to belong?”, “How does faith help Christians when they suffer?”, “Should we care for the World?”. There are also one-hour Workshops for Year 6 in the Summer term looking at the Changes, Choices and Challenges the children will face as they move to Secondary School. The schools vary in which activities they choose to use and it can be a challenge to organise the schedule.

Finally, in Primary Schools, SSW offers “iWonder Spaces.” These are one-hour programmes for an individual class or a couple of classes where children explore through a variety of visual sensory and engagement activities their feelings, emotions and reactions to life experiences.

The “Space” centres around a large “tree” onto which children can write or post prayers. There are different areas where they explore individual issues for a few moments as they move round the space. They are encouraged to consider their own impact on the world and on the people around them. Some schools may devote a full day, covering the whole school, whilst others may focus on a single year group if they have a 3 or 4 class entry.

Work in Secondary Schools is a bit different although it does include some assemblies. SSW helps to establish and support children-led Christian Unions, some of which include teachers. Sixth form conferences are run on topical issues affecting children, such as knife crime, drugs and body image. Q & A sessions are run to provide opportunity for children to query Christians on what they believe and why.

People often express surprise at the freedom which SSW has to share the Christian faith in state schools as well as private schools. We believe we have been blessed over the years by very receptive and encouraging Heads and teachers responsible for RE in their schools. We respect the multicultural multi faith ethos of schools and appreciate the way in which they acknowledge our beliefs. When presenting material, we always state clearly that we are saying “what Christians believe”, rather than stating things as truth or fact. In some cases, the School’s RE Lead welcoming us is from another faith, and this often prompts interesting conversations afterwards.

My work in Primary Schools has linked well with the children’s work at my home church where I have helped with the same age groups. Most of the children go to schools where I am doing SSW activities, which connects well. As a new initiative recently, we have started a Friday after school Youth Club for Years 5-9 at the Leisure Centre next to the building where our church meets. This is in the local council estate and is near to the Community Hall where our church provides activities through the week. Some of the children come to a ‘Tea and Toast’ after school session on Tuesdays. The Friday Youth Club provides games, craft, music and a free meal which they eat during a Christian-based “middlelogue”. We asked the children what their favourite Youth Club name would be and they replied, “I don’t know”, so it is called “IDK”.

We are blessed in Sutton to be able to share the love of Jesus with children in the Borough.

You can never have enough blankets

I had to start with this title as my husband keeps asking what am I going to do with each one I make. He seems to think we have too many or something.

Back in January I saw a Facebook post about a group that was starting up in Angmering (a village a mile or two down the road) to do a CAL (crochet along). We met and decided on a Fall into Autumn pattern and duly bought the resources for that. On the third Tuesday of each month, we met to start each part of the blanket together for a couple of hours and then completed that part at home before starting the next part the following month. The result can be seen below and now we are about to start another one. It is a lovely group and I enjoy meeting and socialising with these ladies.

My other projects so far recently have been a sunglasses case, a dog blanket, and pattern testing for a new book that has come out. This was very interesting and as a thank you I got a free copy of the book!

I also taught myself to knit as Bristol Methodist Church has a scheme where they produce a pattern for Advent and Lent with a knitting pattern, split into daily parts, and a reflection appropriate to the season. Easter was a shawl, and my friend at church and I supported each other through the weeks.

Finally, as a church we decided to put together a Last Supper display and several knitters and crochet enthusiasts worked together to produce a lovely display, much admired by all who visited the church during Easter. Find out more about the Knitalongs and to sign up to the Knitalong mailing list here <https://www.vic-methodist-bristol.org.uk/knitalongs/>



Angmering Crochet Group



Last Supper



Dog blanket



Lent Shawl



Sunglasses case

Pam Harrison, Goring Methodist Church

The Extra Mile

The Extra Mile has experienced several changes in the past few months! We are very grateful to Pam for continuing to liaise with referrers long after her move to Sussex and we were thrilled that Alison Baker came on board to take on that role. She had been one of our most prolific referrers, always going above and beyond for the families she supported and she understands how TEM works.

One noticeable change recently is the rise in the number of mums asking for prams/buggies for newborns, partly caused by other charities closing. We still have a long waiting list for these.

TEM only functions with hard-working, dedicated volunteers every Monday and Wednesday morning, putting together the items requested, handing them to the professionals who collect them, and also receiving donations. We are blessed with amazing support from families in the community passing on the clothes and equipment outgrown by their children. We are also helped enormously by other charities, churches and organisations: - The Hygiene Bank (toiletries and nappies), Surplus to Supper (buggies left at the airport), Project Linus (handmade quilts), Stripey Stork (various including generic school uniform and shoes), local foodbanks (baby milk and food), Harris & Hoole St Margarets (items we ask them to source), and knitting groups. Below is a picture of the lovely ladies of the Farnham knitting group who make beautiful knitwear for children of all ages and also dress dolls and Barbies and make little teddy bears.)

On 17 November we will again be having a Toy Service for TEM. We always need toys and books especially for children aged 18 months and under and hope that you will be able to support us.

Finally, do please pray for the team, the hard-working professionals and the families.

Liz Windaybank



Farnham Assist Knit and Natter Group

Coach outing to Portsmouth

Earlier in the year Ladies Guild discussed the possibility of a summer coach outing and the local Townswomen's Guild considered the same thing! Both groups felt that they would be unable to fill a coach, even a 29-seater, so it was decided to join together and invite church members.

Various destinations were suggested, but eventually Portsmouth was chosen. It was thought that it offered a variety of things to do - the Historic Dockyard, Harbour boat trips, Gunwharf Quays for those who enjoy shopping, walks around the old city and the D Day Museum at Southsea. The latter was very appropriate with the 80th anniversary of D Day celebrations taking place this year.

Our first stop was at Gunwharf Quays where the majority of people got off. Ten of us went on to Southsea where eight visited the museum and Southsea Castle, while two walked back along the coast to Old Portsmouth. Those who went in the museum were very impressed by the entire exhibition, but especially by the Overlord Embroidery. This tells the story of D Day and the Battle of Normandy. It was commissioned by the 2nd Lord Dulverton to commemorate all those who took part in both of these events. The inspiration was the Bayeux Tapestry, an embroidery with wool on linen. The Overlord Embroidery is 13 metres longer than the Bayeux Tapestry and was created using a different technique, appliqué.

The appliqué method consists of mostly simple shapes of solid colour. The 3D effect is achieved by overlaying different colours, use of cord outlines and by some use of embroidery on top, particularly on the faces. The overall effect is very realistic and moving.

It was designed by one artist, Sandra Lawrence, who was only 22 when first approached with the idea in 1967. Her designs were approved by a committee from all three services and three military historians.

The embroidery consists of 34 panels and was stitched by embroiderers from the Royal School of Needlework which was based in South Kensington at the time. It took five years to complete. Over 50 different fabrics were used, including some from actual uniforms of the period.

On completion a permanent home had to be found to house the embroidery. For five years it toured various venues including in the USA and Canada and, from 1978 to 1984, was displayed at the Whitbread Brewery in London. In 1983 Portsmouth City Council offered to build a museum to house the embroidery along with other exhibits. On 3rd June 1984 the D Day Museum was opened by the Queen Mother.

The first panels show images of life in wartime Britain. The largest part shows troops travelling to France by air and sea, the landing on the beaches and fighting inland. There is a panoramic view across two panels which shows the scale of crossing the channel. There was great attention to detail in getting the uniforms absolutely correct. The faces on panels which show the main commanders involved - General Eisenhower, General Montgomery and Prime Minister Winston Churchill - are instantly recognisable. King George VI features twice. Panel 30 shows the complete destruction of the city of Caen by Allied bombing. The final panel shows troops marching through the countryside, but importantly includes a tribute to the role of the brave French Resistance.

For anyone who has not seen it, everyone who went to the museum on our trip would highly recommend a visit. Find out more here <https://thedaystory.com>

(Acknowledgements to the booklet "Stitching D Day" for facts and figures in this article.)

Janice Thompson

During the trip to Portsmouth there was the opportunity to visit the D-Day Story (formerly the D-Day Museum) in Southsea and it was well worth the visit. It tells the story of Operation Overlord during the Normandy D-Day landings.

The focus of the D-Day Story is the liberation of Europe from Nazi Germany occupation. It is told using the personal possessions and words of the people who took part which makes it very interesting and easy to relate to. Based on ordinary people working together to achieve the extraordinary, the D-Day story features the experiences of men, women and children, and holds over 10,000 items. The story is brought to life by audio-visual presentations, authentic vehicles and hands on interactive activities.

The story is told in four parts:

First the visit begins on board Landing Craft Tank 7074 – the last surviving LCT from D-Day. Displayed on the deck which can accommodate 10 tanks are a Sherman tank and a Churchill tank.

Next are the preparation galleries which explain the planning that went into the operation, and not least the concern about the weather conditions.

D-Day and the battle of Normandy follows, which focusses on 6 June, including a replica Infantry landing craft as part of an audio-visual display in which there is a chance to get a sense of what it must have been like to be in a craft waiting to land on the beach.

Finally, the visit is concluded at the Legacy Gallery and Overlord Embroidery made up of awe-inspiring stitched panels that tell the story of D-Day.

Chris Broomfield

We were dropped off at Southsea Castle, which was built in 1544 by Henry VIII and was in surprisingly good condition. We walked all round the upper walls, which gave an excellent view across the Solent.

We decided to walk to Gunwharf Quays, a distance of 1.7 miles along the Millenium Promenade. It was a very blustery morning, but invigorating! We passed the Royal Garrison Church, which had its roof destroyed in 1941 by German bombs - it's remained like this as a tribute to those who lost their lives in the War. Nearby was Long Curtain Bridge, linking to the Battery - the only surviving section of the ramparts and moat which once enclosed the old town. We walked past the Spice Island Inn, dating back to 1700, which was the first place spices from Jamaica landed.

We followed a stone motif set into the pavement which led us to the harbour, where we met up with Cathy and James for a very interesting boat trip, seeing the large aircraft carriers, the Prince of Wales and the Queen Elizabeth. We also saw HMS Dragon, the only Royal Navy ship not completely grey - it has a red dragon on the side. It was very blustery, but no one was seasick - a most enjoyable day.

Helena and Sarah

We spent our time in Portsmouth at the Historic Naval Dockyard. We saw the Victory, the Warrior and the Mary Rose. For Cathy the highlight was the Mary Rose which had amazing technology helping to bring it to life. The highlight for James was the Warrior, because you could wander around exploring the ship. However, we both loved the antique slot machines, some quite gruesome but all very entertaining. We finished off with the Harbour boat tour with Helena and Sarah. A great day out! **Cathy**



HMS Warrior



HMS Victory with
HMS Queen Elizabeth behind



HMS Prince of Wales



Ladies Guild Programme Autumn 2024

September 24th. 60th anniversary lunch at La Familia 12.30

October 8th. Memories of the Guild. What were you doing in 1964? (The year Ladies Guild started.)

October 22nd. Medical Detection Dogs - Geoffrey Lambert

November 5th. Suzette Nicholson - on her year as Mayor of Richmond

November 19th. To be arranged

December 3rd. Carols and Mincepies

December 17th. Christmas Lunch, hopefully at Sunbury Court.

If you would be interested in coming to any of these events do let Janice know. When there is a speaker we even let men come along! This also applies to the Christmas lunch!

Magazine editors: Willem Sandberg and Liz Windaybank

Cover photo taken by Wendy at the Flower Festival at St Saviour's Church, Guernsey